



NEW LED
*Work
Lamps*

NEW LED

Work

Lamps



Lucidity Australia Pty Ltd

87 Paraweena Drive, Truganina, VIC3029

Tel: + 61 (03) 9219 4074

Email: info@lucidity-au.com

Web: www.lucidityaustralia.com.au



LUCIDITY is a leading lighting manufacturer for global commercial and leisure vehicles with headquarter in Taiwan. More than three decades of dedication, besides designing and manufacturing Original Equipment lamps and wiring harness for a wide variety of manufacturers in North America, Europe and Australia. LUCIDITY produces the most comprehensive replacement lights in the industry worldwide.

"Assure the best quality to exceed customer's expectation" is our quality policy. Our complete product range comprises a variety of innovative LED lights, incandescent lights, reflex reflectors, mounting parts, electrical accessories, etc. As an ISO/TS-16949, ISO 14001, OHSAS 18001 and ISO 50001 certified manufacturer, each new product meets the highest quality standard and customer specific requirements of the industry, strictly tested by a TUV NORD certified in house test laboratory prior to market release. We build quality into all aspects of our business and our ultimate goal is to achieve and maintain absolute customer satisfaction.

Innovation is the wellspring of our consecutive growth. At LUCIDITY, innovation means not only new ideas but also putting ideas into practice. Being a customer of LUCIDITY, you will experience the opportunity to work with the well-trained, dedicated customer-oriented professionals and the highest level of service all the time.



Headquarter Taiwan



Lucidity Enterprise Co., Ltd
Tainan, Taiwan



Lucidity OÜ
Tartu, Estonia



Lucidity s.r.o.
Prague, Czech



Optronics Inc.- Muskogee
Oklahoma, USA



Optronics Inc.- Goshen
Indiana, USA

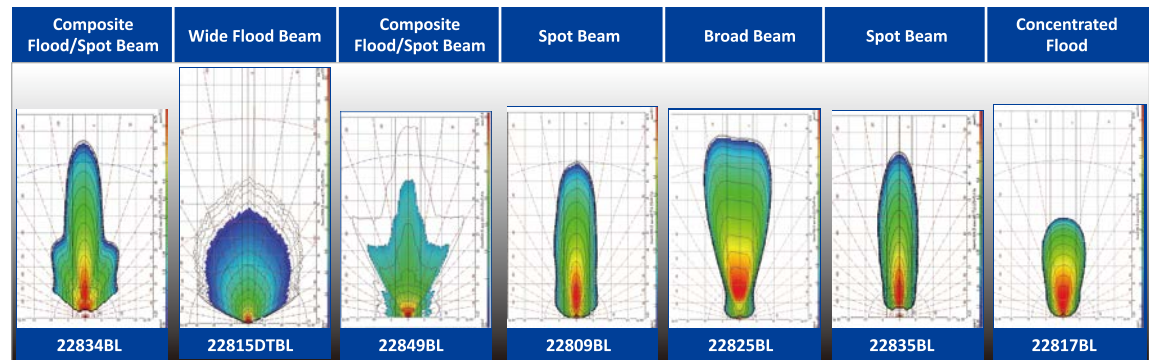


Lucidity Australia Pty Ltd
Melbourne, Australia



LED WORK LAMPS

Lumen	2400	2160	1680	1440	1440	960	720
Item Number	22834BL	22815DTBL	22849BL	22809BL	22825BL	22835BL	22817BL
Voltage	12-36V	12-36V	12-36V	12-36V	12-36V	9-36V	12-36V
Beam	Composite Flood/Spot	Wide Flood	Composite Flood/Spot	Spot	Broad	Spot	Concentrated Flood
LEDs	10 SMD	9 SMD	7 SMD	6 SMD	6 SMD	4 SMD	3 SMD
Watt	28	22	21	18	19	11	8
HV CD	4000	5280	1500	3450	4600	4000	1100
Current Draw	1.5 Amps at 12 Volts 0.5 Amps at 24 Volts	1.3 Amps at 12 Volts 0.67 Amps at 24 Volts	1.3 Amps at 12 Volts 0.67 Amps at 24 Volts	1.5 Amps at 12 Volts 0.5 Amps at 24 Volts	1.3 Amps at 12 Volts 0.67 Amps at 24 Volts	1.3 Amps at 12 Volts 0.67 Amps at 24 Volts	1.3 Amps at 12 Volts 0.67 Amps at 24 Volts
Housing	Aluminum	Aluminum	Aluminum	Aluminum	Aluminum	Aluminum	Aluminum
Connection	280mm Cable	Deutsch Connector & 280mm Cable	280mm Cable	280mm Cable	280mm Cable	280mm Cable	280mm Cable
Dims	168.3mm W 152.4mm H 67.7mm D	125mm W 176mm H 60.1mm D	105.7mm W 141.9mm H 58mm D	104.9mm W 162.3mm H 54.2mm D	150.4mm W 115.2mm H 61mm D	83mm W 144.7mm H 60mm D	70mm W 131.3mm H 42.6mm D
IP Rating	IP69K	IP69K	IP69K	IP69K	IP69K	IP69K	IP69K
Weight	600g	685g	377g	518g	600g	666g	173g
Page	p02	p03	p04	p05	p06	p07	p08

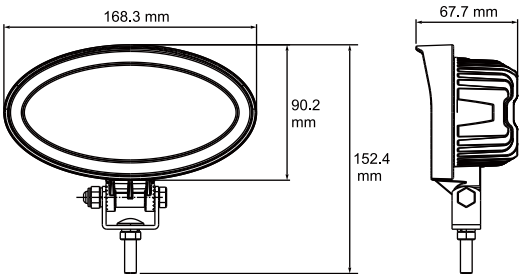


LED GLO TRAC WORK LAMPS

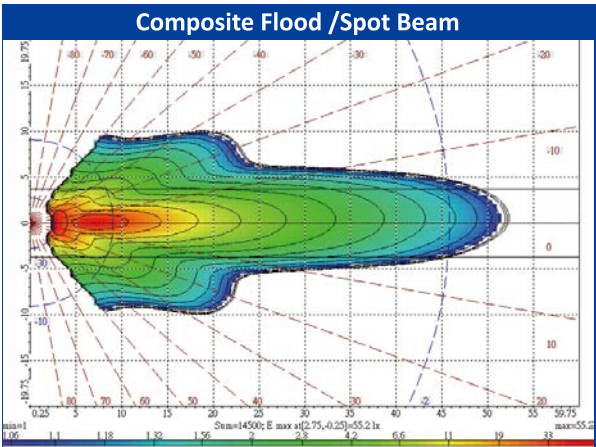
Part No. 22834BL	
Key Features	
Voltage	12-36 Volts
IP Rating	IP69K
Beam Pattern	Composite Flood /Spot Beam
Housing	Aluminium
Mounting Hardware	Stainless Steel
Lens Material	Polycarbonate
Circuit Protection	Reverse Polarity Protected
Additional Features	Glo Trac Optical Illumination Hi/Low Beam Output
Watt	28
SMD	10
Lumen	2400
HV CD	4000
Current Draw	1.5 Amps at 12 Volts 0.5 Amps at 24 Volts
Connection	280 mm cable
Weight	600



Glo Trac Optical Technology



Resistant To:	
Water	Yes
Dust	Yes
Warpage	Yes
Temperature	-30C to 50C





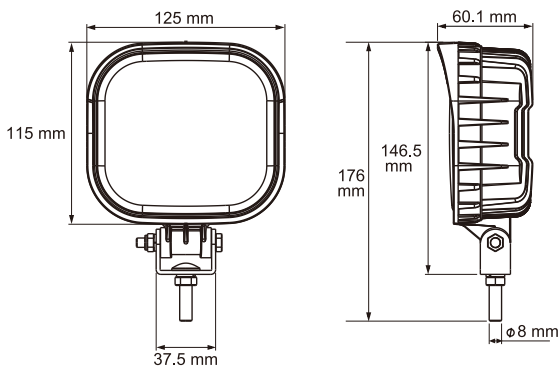
LED WORK LAMPS

Part No. 22815DTBL

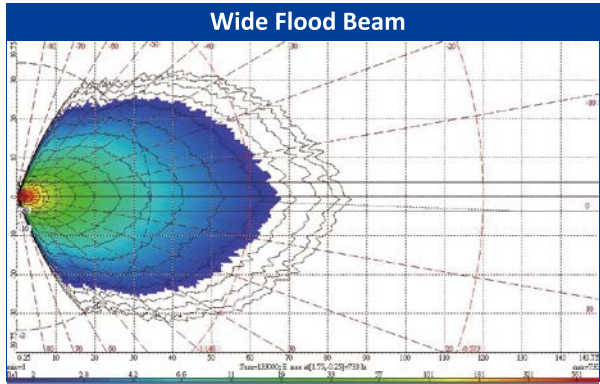
Key Features	
Voltage	12-36 Volts
IP Rating	IP69K
Beam Pattern	Wide Flood Beam
Housing	Aluminium
Mounting Hardware	Stainless Steel
Lens Material	Polycarbonate
Circuit Protection	Reverse Polarity Protected
Watt	22
SMD	9
Lumen	2160
HV CD	5280
Current Draw	1.3 Amps at 12 Volts 0.67 Amps at 24 Volts
Connection	Deutsch Connector & 280mm Cable
Weight	685g



Built-in Deutsch Connector



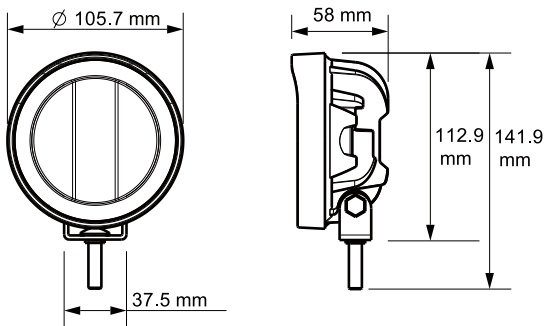
Resistant To:	
Water	Yes
Dust	Yes
Warpage	Yes
Temperature	-30C to 50C



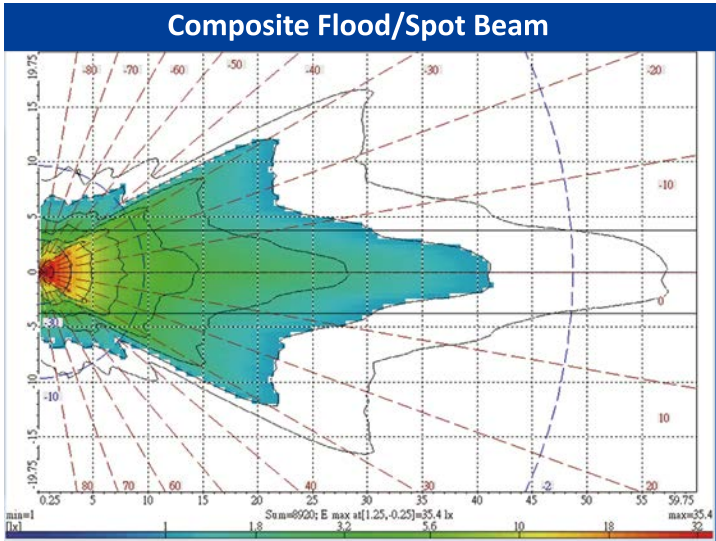
LED WORK LAMPS with CURVED LENS

Part No. 22849BL

Key Features	
Voltage	12-36 Volts
IP Rating	IP69K
Beam Pattern	Composite Flood/Spot Beam
Housing	Aluminium
Mounting Hardware	Stainless Steel
Lens Material	Polycarbonate
Circuit Protection	Reverse Polarity Protected
Watt	21
SMD	7
Lumen	1680
HV CD	1500
Current Draw	1.3 Amps at 12 Volts 0.67 Amps at 24 Volts
Connection	280 mm cable
Weight	377g



Resistant To:	
Water	Yes
Dust	Yes
Warpage	Yes
Temperature	-30C to 50C





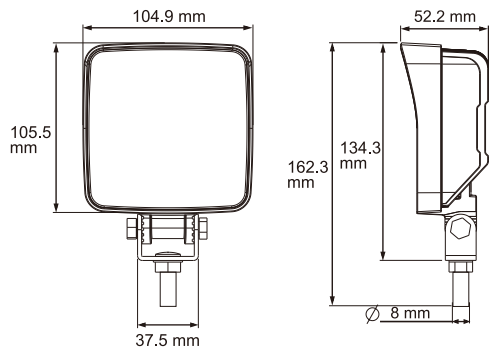
LED WORK LAMPS

Part No. 22809BL

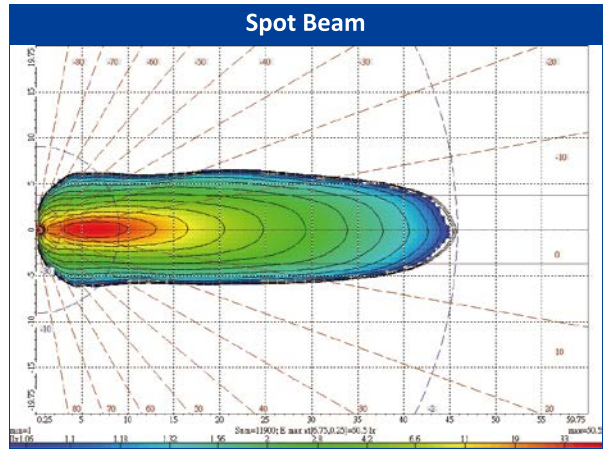
Key Features	
Voltage	12-36 Volts
IP Rating	IP69K
Beam Pattern	Spot Beam
Housing	Aluminium
Mounting Hardware	Stainless Steel
Lens Material	Polycarbonate
Circuit Protection	Reverse Polarity Protected
Watt	18
SMD	6
Lumen	1440
HV CD	3450
Current Draw	1.5 Amps at 12 Volts 0.5 Amps at 24 Volts
Connection	280 mm cable
Weight	518g



Reverse function:
ECE compliance in the declination
angle of 30 degrees



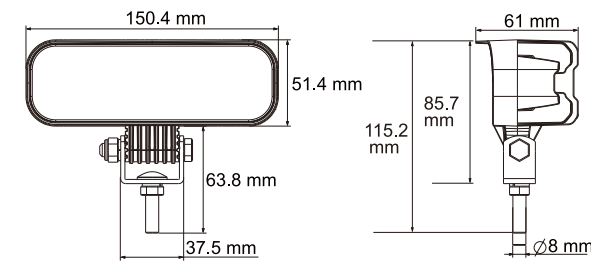
Resistant To:	
Water	Yes
Dust	Yes
Warpage	Yes
Temperature	-30C to 50C



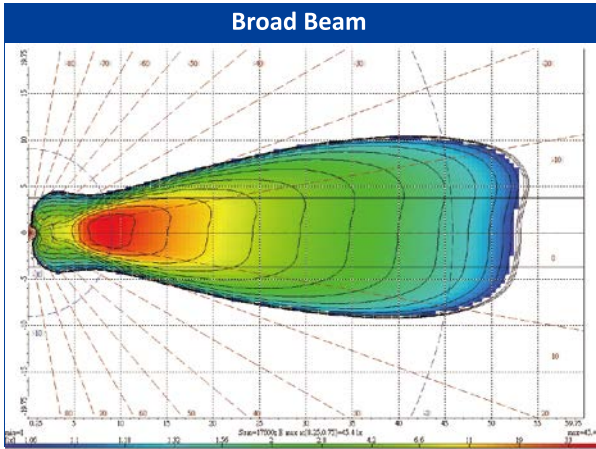
LED WORK LAMPS

Part No. 22825BL

Key Features	
Voltage	12-36 Volts
IP Rating	IP69K
Beam Pattern	Broad Beam
Housing	Aluminium
Mounting Hardware	Stainless Steel
Lens Material	Polycarbonate
Circuit Protection	Reverse Polarity Protected
Watt	19
SMD	6
Lumen	1440
HV CD	4600
Current Draw	1.3 Amps at 12 Volts 0.67 Amps at 24 Volts
Connection	280 mm cable
Weight	428g



Resistant To:	
Water	Yes
Dust	Yes
Warpage	Yes
Temperature	-30C to 50C

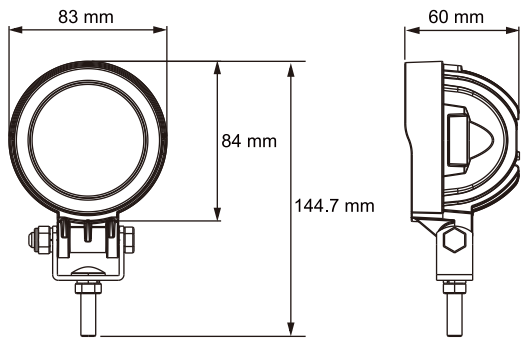




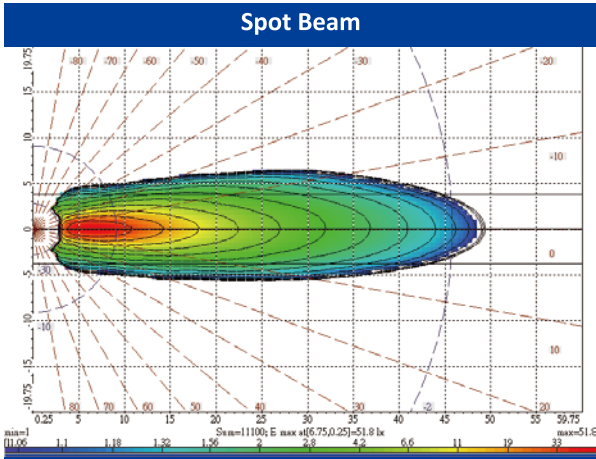
LED WORK LAMPS

Part No. 22835BL

Key Features	
Voltage	9-36 Volts
IP Rating	IP69K
Beam Pattern	Spot Beam
Housing	Aluminium
Mounting Hardware	Stainless Steel
Lens Material	Polycarbonate
Circuit Protection	Reverse Polarity Protected
Watt	11
SMD	4
Lumen	960
HV CD	4000
Current Draw	1.3 Amps at 12 Volts 0.67 Amps at 24 Volts
Connection	280 mm cable
Weight	666g



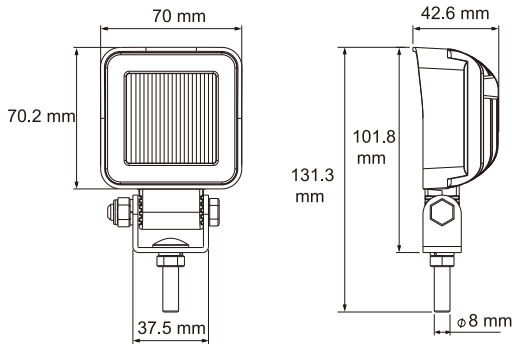
Resistant To:	
Water	Yes
Dust	Yes
Warpage	Yes
Temperature	-30C to 50C



LED WORK LAMPS

Part No. 22817BL

Key Features	
Voltage	12-36 Volts
IP Rating	IP69K
Beam Pattern	Concentrated Flood
Housing	Aluminium
Mounting Hardware	Stainless Steel
Lens Material	Polycarbonate
Circuit Protection	Reverse Polarity Protected
Watt	8
SMD	3
Lumen	720
HV CD	1100
Current Draw	1.3 Amps at 12 Volts 0.67 Amps at 24 Volts
Connection	280 mm cable
Weight	173g



Resistant To:	
Water	Yes
Dust	Yes
Warpage	Yes
Temperature	-30C to 50C

