

# OMP Plug-in Kit installation

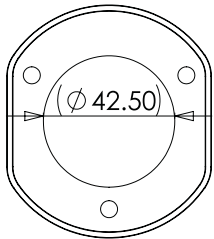
## INITIAL STEPS:

12V

### \* IMPORTANT

#### Mounting information

Ensure your mounting holes are as per drawing:

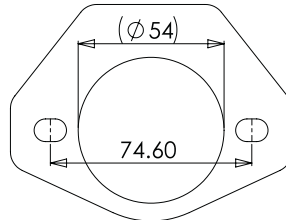


24V

### \* IMPORTANT

#### Mounting information

Ensure your mounting holes are as per drawing



### \* IMPORTANT

#### Steps to take before soldering

- 1 Prepare cable on trailer for soldering
- 2 Add heat shrink to each cable before soldering
- 3 Ensure rubber boot is fitted to cable before soldering

## INSTALLATION STEPS:

### 4 Solder wires

Green to green, yellow to yellow etc.

### 5 Heat shrink

Place heat shrink in correct location & shrink.

### 6 Align for connection

Align key way on socket and connector, place alignment bump on locking ring at 1 O'Clock.

### 7 Plug-in

Fit the connector to socket.

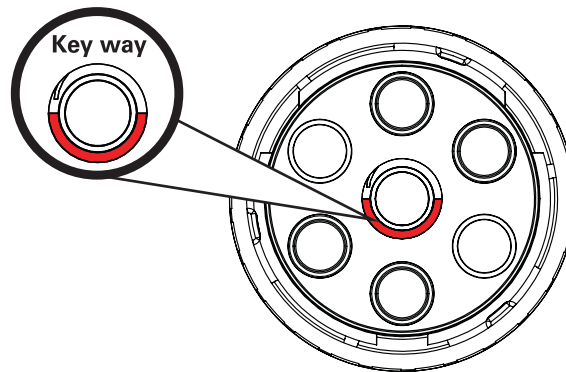
### 8 Lock in place

When facing the socket, turn locking ring clockwise to lock. The ring should snap into place.

### 9 Mounting

Mount connector into rubber boot and bolt down to trailer.

## CONNECTOR



## BACK OF SOCKET

